

KEEP THIS OWNER'S MANUAL WITH YOUR VITAL HOUSEHOLD RECORDS

NAME: _____ DATE: _____

INSTALLATION ADDRESS _____

INSTALLER _____

LIC# _____

SERIAL # _____

FOR LITTLE FIREFIGHTER'S LIMITED WARRANTY AND REMEDIES SEE ENCLOSED PAGE

Warning: The Manually Reset Earthquake Shut-off FAGV Series Valve must be installed by a qualified installer in accordance with the manufacturer's installation instructions. Properly installed seismic gas shut-off valves will not be activated accidentally by equipment, vehicles or industrial vibrations. If improperly installed, failure to function as intended or unwarranted interruption of gas service could result. The FAGV Series Valve has been tested and approved in accordance with State of California Standard 12- 23-1 and ASCE 25-06 Requirements.

INSTALLATION CLEARANCES

Screwdriver access shall be provided to the front and top of the valve. Allow enough clearance on the top of the valve to view status of the valve.

INSTALLATION GAS SHUT-OFF

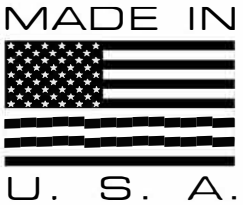
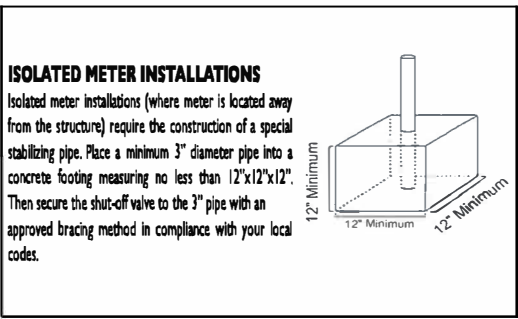
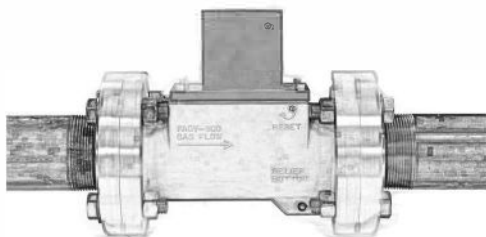
Qualified personal should install the valve. Some cities require submitting a plan to obtain a plumbing permit. Work must be in compliance with local codes, or, in absence of local codes, with the National fuel Gas Code, ANSI ASC Z223/NFPA 54 and if applicable, the National Electrical Code, ANSI/NFPA 70.

APPROVED GASES

Natural Gas or Propane

TEMPERATURE

This device operates properly from -20° F to 150° F

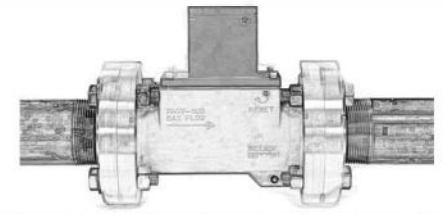


Little Firefighter valves are proudly made in the USA by:

FIREFIGHTER GAS SAFETY PRODUCTS
 204 S. CENTER ST.
 SANTA ANA, CA 92703



Important Warranty Information
 Do not hold valve with pipe wrenches, channel locks, vise grips or pliers. Damage or scuffing of the valve body will result. Use only smooth surface wrenches like crescent wrench or an open ended wrench to install valve.
All warranty rights are null and void if the valve body is damaged by improper installation.



Operational Test for models FAGV Series

Qualified personnel should perform a functional test every five (5) years as follows: Using a coin or screwdriver, turn the RED (Shut-Off) Shaft 1/8 of a turn (45°) in the direction indicated, closing the valve. Verify that the valve closed by looking into the sight glass: Red = Closed. Check that the flow of gas has stopped. Once operational test is complete, refer to the reset instructions below.

AFTER AN EARTHQUAKE OR RESETTING THE VALVE

Wear shoes; expect broken glass. Check for safety of family members. Inspect for: Smell of gas in house. Overturned gas water heaters and appliances and damaged exhaust vents. If any of the above have occurred, or if gas was shut off automatically, shut off the main meter valve. Have a qualified person re-light gas after inspection.

RESET INFORMATION

To reset valve: Close wrench operated gas inlet valve and turn the "Shut-Off" shaft 1/8 of a turn (45°) in the indicated direction. Press down on the "Pressure Relief" Button until you hear a slight hiss. This hiss is the pressure escaping through the bypass which relieves the pressure on the Flapper, allowing it to be reset. Hold down the button until the hissing stops. This will occur when the pressure has been equalized. If the hissing doesn't taper off and stop, make sure the meter inlet valve is completely closed and try again. After the pressure is relieved, turn the "Reset" shaft 1/8 of a turn in the indicated direction. Look through the sight glass to confirm the valve is open, Silver=Open. **DO NOT FORCE.** Turn the wrench operated meter inlet valve back on. Re-light pilot lights according to manufacturer's instructions.

MODEL FAGV-300
 Equivalent Pipe Length 3 ft

| PRESSURE DROP | INLET PRESSURE (PSI) | | | | |
|---------------|----------------------|-------|-------|-------|----|
| | PSI | IWC | 3 | 7 | 10 |
| 0.018 | 0.5 | 9623 | 14725 | 17607 | |
| 0.036 | 1 | 13568 | 20798 | 24877 | |
| 0.072 | 2 | 19072 | 29336 | 42933 | |
| 0.108 | 3 | 23214 | 35836 | 42933 | |
| 0.144 | 4 | 26638 | 41271 | 49484 | |
| 0.18 | 5 | 29593 | 46022 | 55224 | |

MODEL FAGV-400
 Equivalent Pipe Length 3 ft

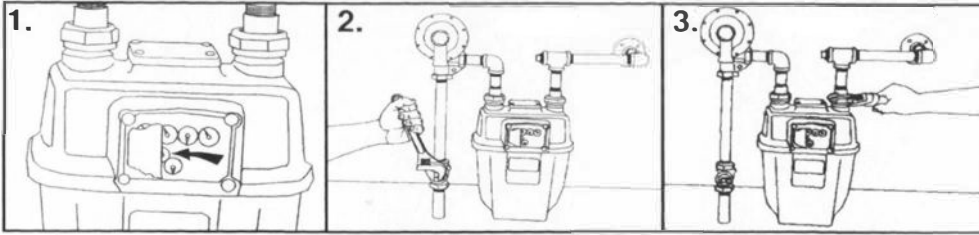
| PRESSURE DROP | INLET PRESSURE (PSI) | | | | |
|---------------|----------------------|-------|-------|--------|----|
| | PSI | IWC | 3 | 7 | 10 |
| 0.018 | 0.5 | 18639 | 28521 | 34102 | |
| 0.036 | 1 | 26280 | 40283 | 48184 | |
| 0.072 | 2 | 36939 | 56821 | 68020 | |
| 0.108 | 3 | 44962 | 69410 | 83156 | |
| 0.144 | 4 | 51594 | 79938 | 95845 | |
| 0.18 | 5 | 57319 | 89139 | 106962 | |

MODEL FAGV-600
 Equivalent Pipe Length 4 ft

| PRESSURE DROP | INLET PRESSURE (PSI) | | | | |
|---------------|----------------------|--------|--------|--------|----|
| | PSI | IWC | 3 | 7 | 10 |
| 0.018 | 0.5 | 48635 | 74419 | 88982 | |
| 0.036 | 1 | 68572 | 105109 | 125726 | |
| 0.072 | 2 | 96385 | 148261 | 177482 | |
| 0.108 | 3 | 117319 | 181110 | 216976 | |
| 0.144 | 4 | 134622 | 208581 | 250086 | |
| 0.18 | 5 | 149561 | 232587 | 279093 | |

www.littlefirefighter.com

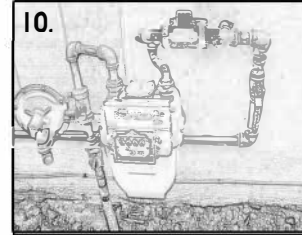
FAGV - SERIES VALVE INSTALLATION INSTRUCTIONS FOR QUALIFIED INSTALLERS



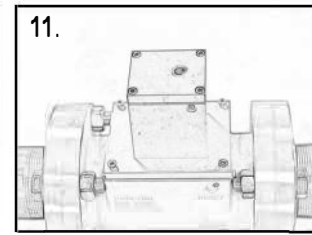
1. Before starting, check to insure the meter is functioning properly by wetting a piece of paper and pasting it over the centerline of the hand of the 1/2-foot dial of the gas meter. Turn on a gas appliance and observe the motion of the hand after five (5) minutes. Notify the Gas Company if the meter is bypassed or defective

2. After notifying all occupants of affected structure that the gas will be shut off during the installation, shutoff all appliances and pilot light valves. Verify the gas in the house is off with the wet paper method from step #1, and then turn the wrench operated meter inlet valve off. Do not tamper with the meter, or the pipe leading to the meter.

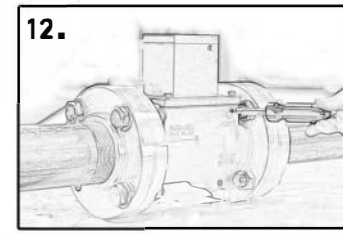
3. Remove the union from the house side of the meter with a pipe wrench and detach the union & tee from the pipe nipple.



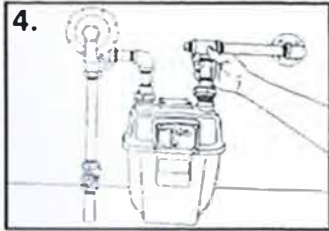
10. Proper stabilization of the valve installation is essential to avoid nuisance tripping. To stop excessive non-seismic vibrations and to comply with any codes, brace the valve with a stabilizer bracket. (Unistrut or approved equivalent)



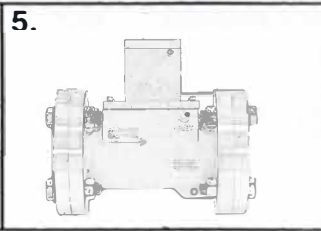
11. After valve is installed, leveled and braced, check to make sure valve is closed by looking through the sight glass on the top of the valve. RED=Closed



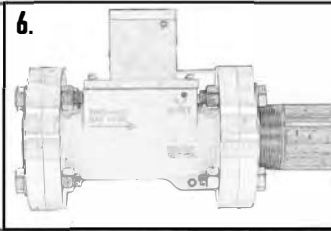
12. To reset valve: close wrench operated gas inlet valve and turn the "shut-off" shaft 1/8 of a turn (45°) in the indicated direction.



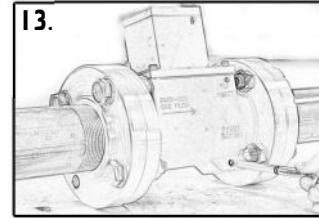
4. Remove the pipe nipple from the line leading to the house. Find a section of pipe large enough for the placement of the valve.



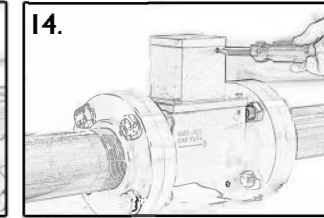
5. Align and loosely connect mounting flanges to the valve flanges. Make sure the flow arrow in the correct direction. Ensure the valve is in a level and plumb position. To verify levelness of the valve, place a level on the top of the valve. The valve must be level to within 2 degrees or 1/2" to either side of plumb per 14" drop.



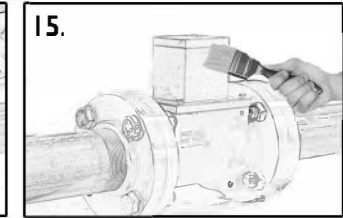
6. When using threaded flanges, thread the downstream mounting flange to the downstream gas piping. Ensure valve maintains its degree of level and plumb. Then thread up stream gas piping into upstream mounting flange



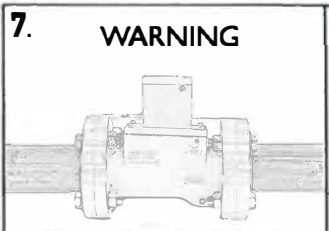
13. Press down on the "Pressure Relief" Button until you hear a slight hiss. This hiss is the pressure escaping from the Flapper, allowing it to be reset. Hold down the button until the hissing stops. This will occur when the pressure has been equalized.



14. After the pressure is equalized, turn the "Reset" shaft 1/8 of a turn in the indicated direction. Look through the sight glass to confirm the valve is open, Silver=Open. The valve should reset easily, DO NOT FORCE.



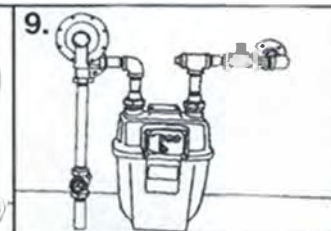
15. Once valve is reset, open the wrench operated meter inlet valve on the gas line. Check for gas leaks on each side of the valve and fittings with soapy water. Bleed air out of gas line and light pilot lights according to the manufacturer's instructions. Bleeding air from lines can take a few minutes.



When using welded flanges, only tack weld the flanges in place when the valve is bolted to them. Then remove valve before finishing the welds to protect valve from the heat



8. Once flanges are attached to the gas piping finish mounting the valve in place using appropriate gaskets and bolts in accordance with all local codes. Make sure to evenly tighten the flange bolts to ensure a proper seal



9. Reconnect all the gas piping back to the meter while ensuring the valve remains level and plumb

FIREFIGHTER

— GAS SAFETY PRODUCTS —