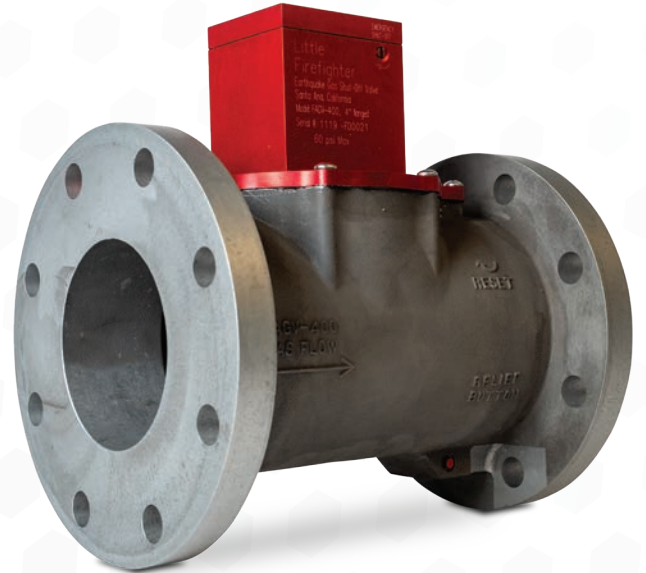


Features:

- Shuts Off Gas When Triggered by a Significant Seismic Event, Greatly Reducing Fire Risk
- Solid Aluminum Design for Strength and Durability
- Built in Emergency Manual Shut-Off
- Complies With All City, State, & Lab Testing Requirements
- ASCE 25-16 Compliant



Industrial Sized FAGV-300 | 400 | 600

Flanged (FAGV-400 Shown)

Model	Pipe Size	Max. Pressure	L	W	H	Wt. (lbs)	CV Value	Equivalent Pipe Length (Ft.)
FAGV-300	3"	60 psi	9.9"	7.5"	10.5"	18	562.5	3
FAGV-400	4"	60 psi	11.1"	9"	11.7"	21	1,089.6	3
FAGV-600	6"	60 psi	13.2"	11"	13.7"	27	2,842.8	4

Flow Capacity Tables (SCFH)

Pressure Drop		Inlet Pressure (psi)		
psi	iwc	3	7	10
0.018	0.5	9,623	14,725	17,607
0.036	1	13,568	20,798	24,877
0.072	2	19,072	29,336	35,118
0.108	3	23,214	35,836	42,933
0.144	4	26,638	41,271	49,484
0.18	5	29,593	46,022	55,224

Pressure Drop		Inlet Pressure (psi)		
psi	iwc	3	7	10
0.018	0.5	18,639	28,521	34,102
0.036	1	26,280	40,283	48,184
0.072	2	36,939	56,821	68,020
0.108	3	44,962	69,410	83,156
0.144	4	51,594	79,938	95,854
0.18	5	57,319	89,139	106,962

Pressure Drop		Inlet Pressure (psi)		
psi	iwc	3	7	10
0.018	0.5	48,635	74,419	88,982
0.036	1	68,572	105,109	125,726
0.072	2	96,385	148,261	177,482
0.108	3	117,319	181,110	216,976
0.144	4	134,622	208,581	250,086
0.18	5	149,561	232,587	279,093